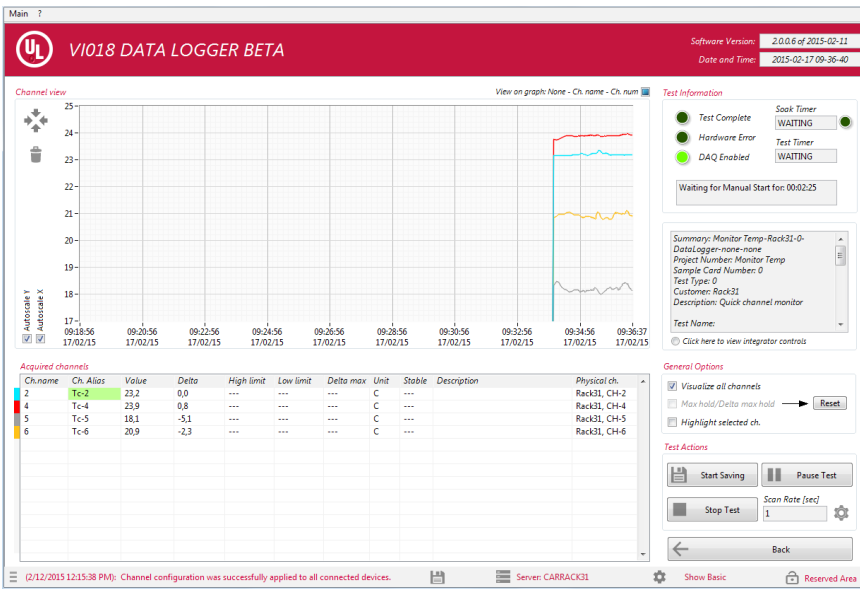




# AUT SW VI018 Data Logger

The Data Logger (server) is a software application for data acquisition tests and data logging.

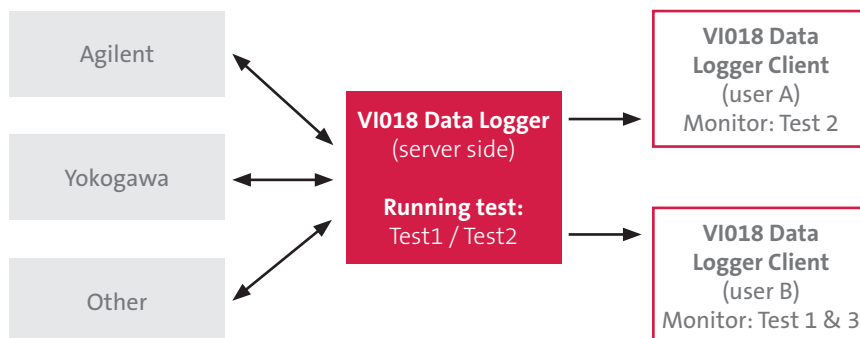


Data logger test view: graph and summary table

This application can acquire data from several connected devices, offering a multi-test platform in which tests run independently, with different scanning lists and different scanning times.

Each separate test can be monitored. Each variable can be shown in graphical format, including run-time, all test information and channel parameters. All data will be saved in a common file for ease of post-processing analysis.

An additional application is also available: it is called Data Logger Client and allows users to remotely connect to Data Logger (server side) and monitor running tests.



Multi Client connection example

## SOFTWARE KEY FEATURES & SPECIFICATIONS

This application, designed with a client-server structure, enables:

- Quick test setup and execution
- Collection, monitoring and management of data
- Presentation of data in graph form
- Export of data to other applications for presentation and analysis.
- Continuous and single data Logging
- Automatic alarm detection
- Possible expansion to multiple channels, with capacity for many hundreds of channels in one project

## ADDITIONAL SOFTWARE

- ED001 Measure Report

## HARDWARE SUPPORTED

- Agilent
- National Instruments
- Yokogawa
- Other on request

For more information or to try a demo, call + 39 02 92526448, or email [Manuel.Rossi@ul.com](mailto:Manuel.Rossi@ul.com)